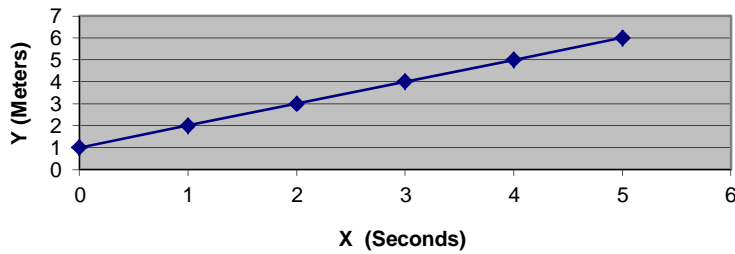


Types of Equations

Direct Linear

$$Y \propto X$$

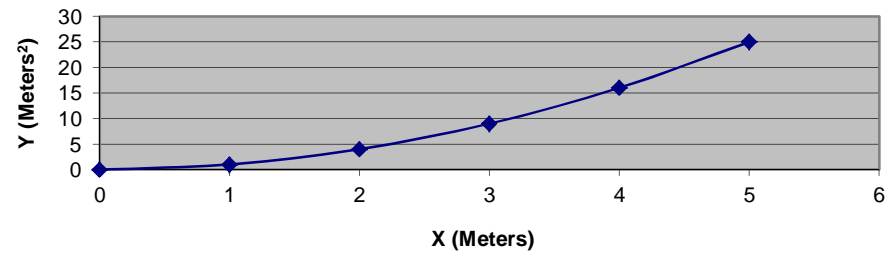
Y vs. X



Direct Square

$$Y \propto X^2$$

Y vs. X



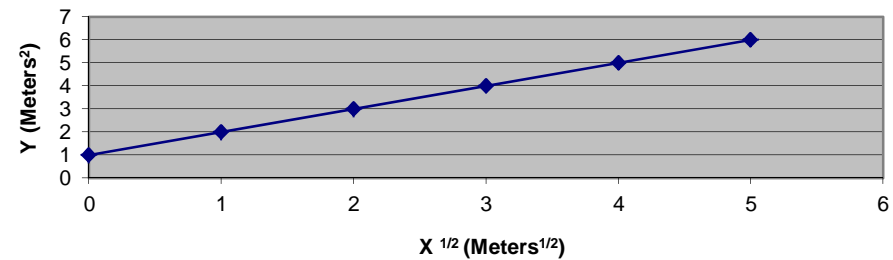
General Form: $Y = mx + b$

General Form: $Y = mx^2 + b$

Linearized Forms



Y vs. $X^{1/2}$



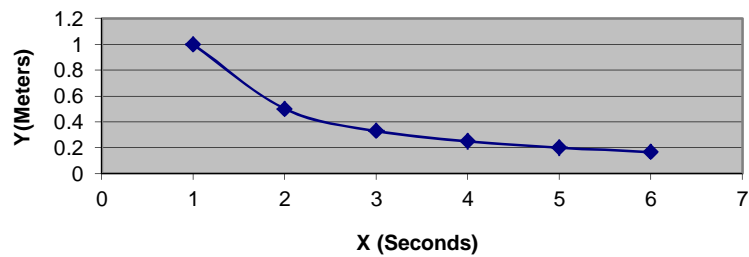
Graphed square root of the data on x axis vs original y

Types of Equations

Inverse

$$Y \propto 1/X$$

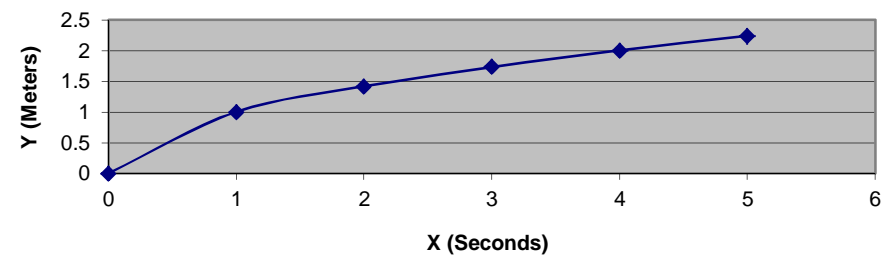
Y vs. X



Direct Square Root

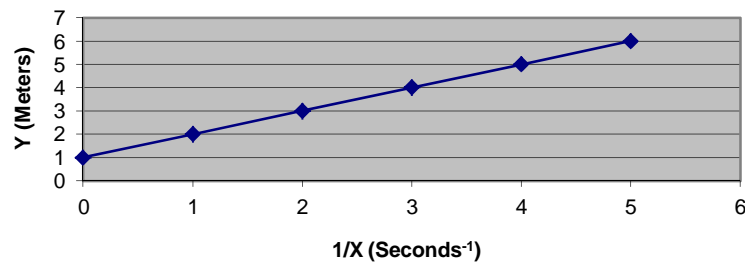
$$Y \propto X^{1/2}$$

Y vs. X



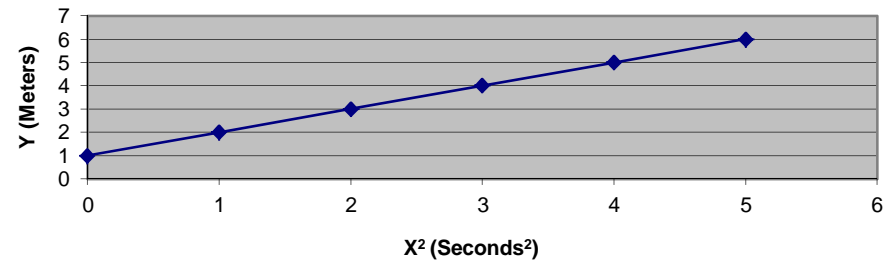
General Form: $Y = m(1/x) + b$

Y vs. 1/X



General Form: $Y = mx^{1/2} + b$

Y vs. $X^{1/2}$



Graph inverse of the data on x axis vs original y

Graph square of the data on x axis vs original y

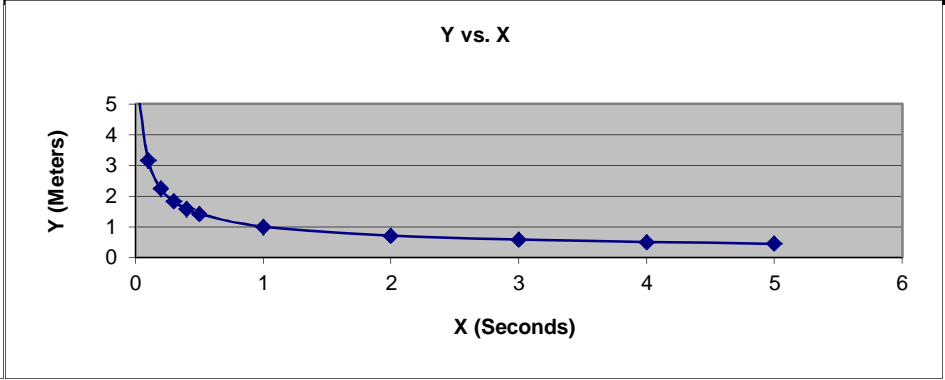
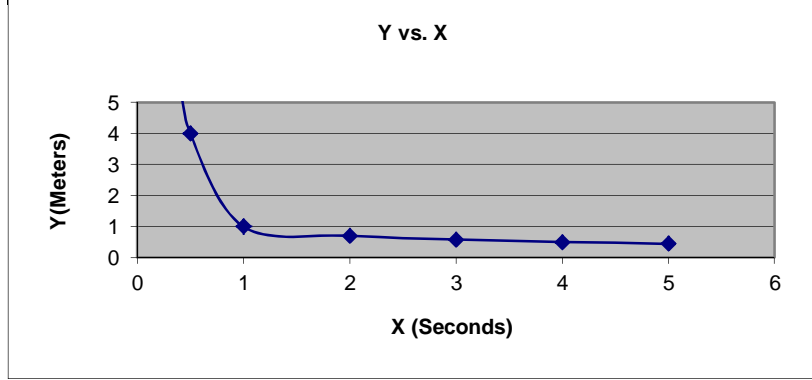
Types of Equations

Inverse Square

Inverse Square Root

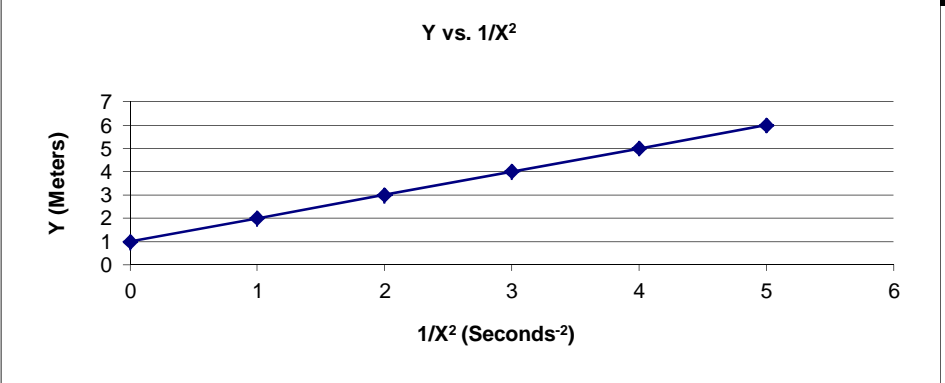
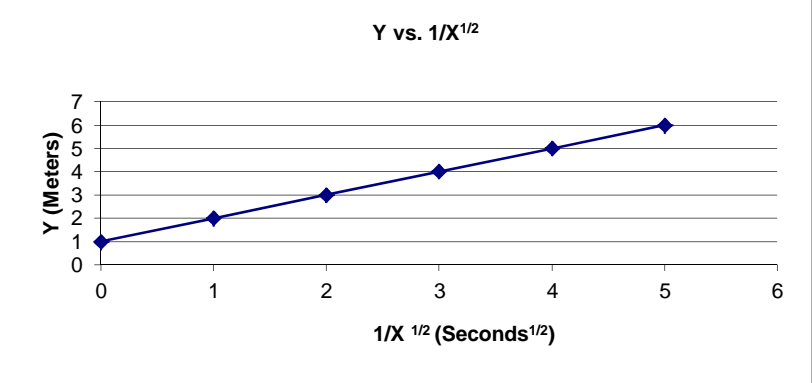
$Y \propto 1/X^2$

$Y \propto 1/X^{1/2}$



General Form: $Y = m(1/x^2) + b$

General Form: $Y = m(1/x^{1/2}) + b$



Graph the inverse of the square root of the data on x axis vs original y

Graph the inverse of the square of the data on x axis vs original y